

Inspection guidance

During the procedure, all VRB 18 axles (1800 Kg rigid axle, 250mm dia. with brake, parabolic suspension) must be checked!

The purpose of the inspection is to determine whether the axle stub may be involved in the recall campaign.

Procedure for checking axles not yet installed:

- 1; The brake backing plate should be inspected from the rear in the direction shown in Annex Photo1.
- 2; If the bracket that holds the brake backing plate is forged, which can be easily determined by the rounded edges of the bracket (Photo2), then there is nothing more to be done with the axle, it can be used.
- 3; If the bracket that holds the brake backing plate is laser-cut type, which can be easily determined by the sharpness of the plate edges and the cut marks on the cutting surface (Photo3), the axle should be further inspected!
- 4; In case the inspected bracket is laser-cut, the production time of the axle has to be identified. The barcode on the axle with serial number (Photo4 and Photo5) helps. You have to check this serial number – no action is necessary if it is preceded by the below numbers.

The serial numbers to be checked:

If the sequence number starts with 12000, the axle with number up to an including 12000576660 is correct

If the sequence number starts with 14000, the axle with number up to an including 14000416969 is correct

If the sequence number starts with 17000, the axle with number up to an including 17000118025 is correct.

- 5; In case the inspected bracket is laser-cut, the production time of the axle has to be identified. The barcode on the axle with serial number (Photo4 and Photo5) helps. You have to check this serial number – in case you find serial numbers following the below numbers, **the axle cannot be used, it has to be replaced!**

The serial numbers to be checked:

If the sequence number starts with 12000, the axle with number starting from 12000576661 is not correct.

If the sequence number starts with 14000, the axle with number starting from 14000416970 is not correct.

If the sequence number starts with 17000, the axle with number starting from 17000118026 is not correct.

- 6; If there is a laser-cut bracket on the inspected axle however there isn't a barcode or it is not readable, it is automatically considered defective and must be replaced

Procedure for checking axles already installed:

- 1; The necessary conditions have to be ensured for the safe performing of the inspection! The trailer must be secured and, if necessary, lifted. During lifting, particular attention must be paid to safety requirements.
- 2; The brake backing plate should be inspected from the rear in the direction shown in Annex Photo1.
- 3; If the bracket that holds the brake backing plate is forged, which can be easily determined by the rounded edges of the bracket (Photo2), then there is nothing more to be done with the axle, it can be used.
- 4; If the bracket that holds the brake backing plate is laser-cut type, which can be easily determined by the sharpness of the plate edges and the cut marks on the cutting surface (Photo3), the axle should be further inspected!
- 5; In case the inspected bracket is laser-cut, the production time of the axle has to be identified. The barcode on the axle with serial number (Photo4 and Photo5) helps. You have to check this serial number – no action is necessary if it is preceded by the following numbers.

The serial numbers to be checked:

If the sequence number starts with 12000, the axle with number up to an including 12000576660 is correct

If the sequence number starts with 14000, the axle with number up to an including 14000416969 is correct

If the sequence number starts with 17000, the axle with number up to an including 17000118025 is correct.

- 6; In case the inspected bracket is laser-cut, the production time of the axle has to be identified. The barcode on the axle with serial number (Photo4 and Photo5) helps. You have to check this serial number – in case you find serial numbers following the below numbers, **the axle cannot be used, it has to be replaced!**

The serial numbers to be checked:

If the sequence number starts with 12000, the axle with number starting from 12000576661 is not correct.

If the sequence number starts with 14000, the axle with number starting from 14000416970 is not correct.

If the sequence number starts with 17000, the axle with number starting from 17000118026 is not correct.

- 7; If there is a laser-cut bracket on the inspected axle however there isn't a barcode or it is not readable, it is automatically considered defective and must be replaced

Photo1:

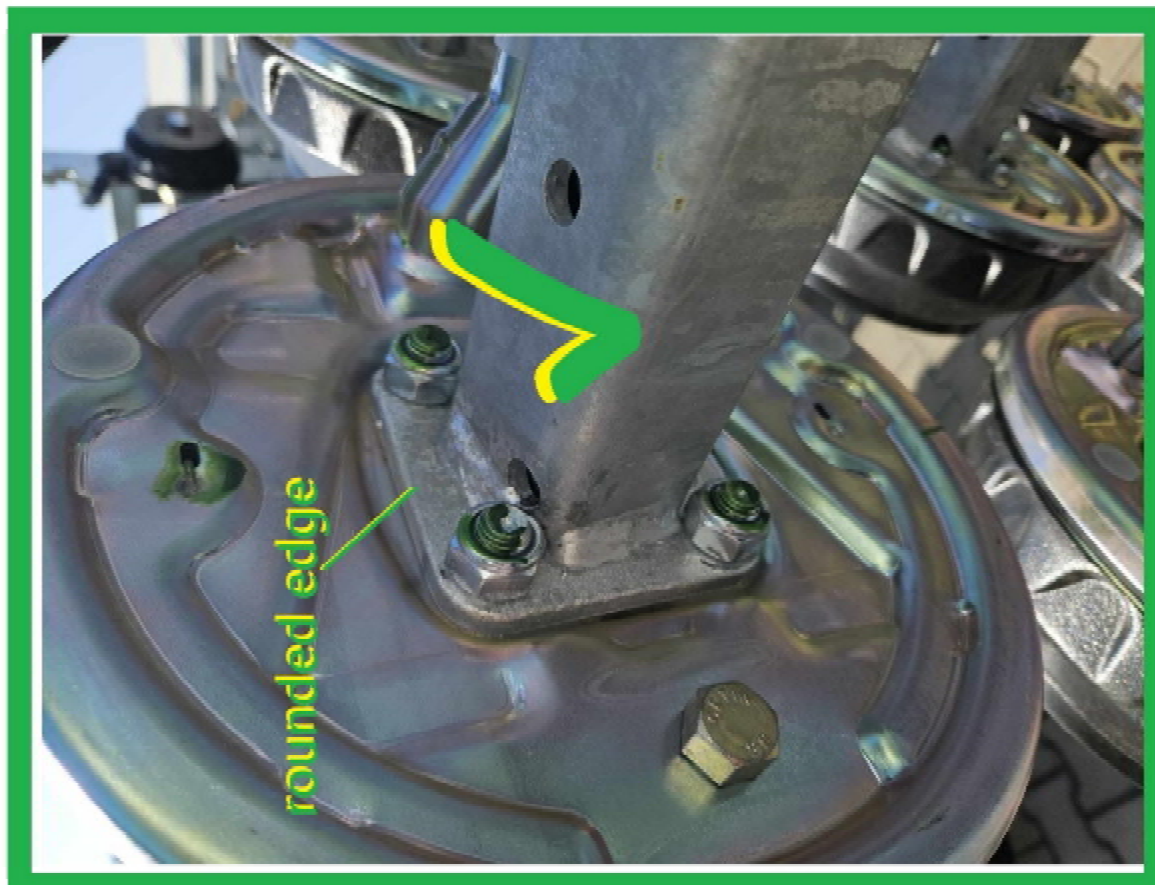
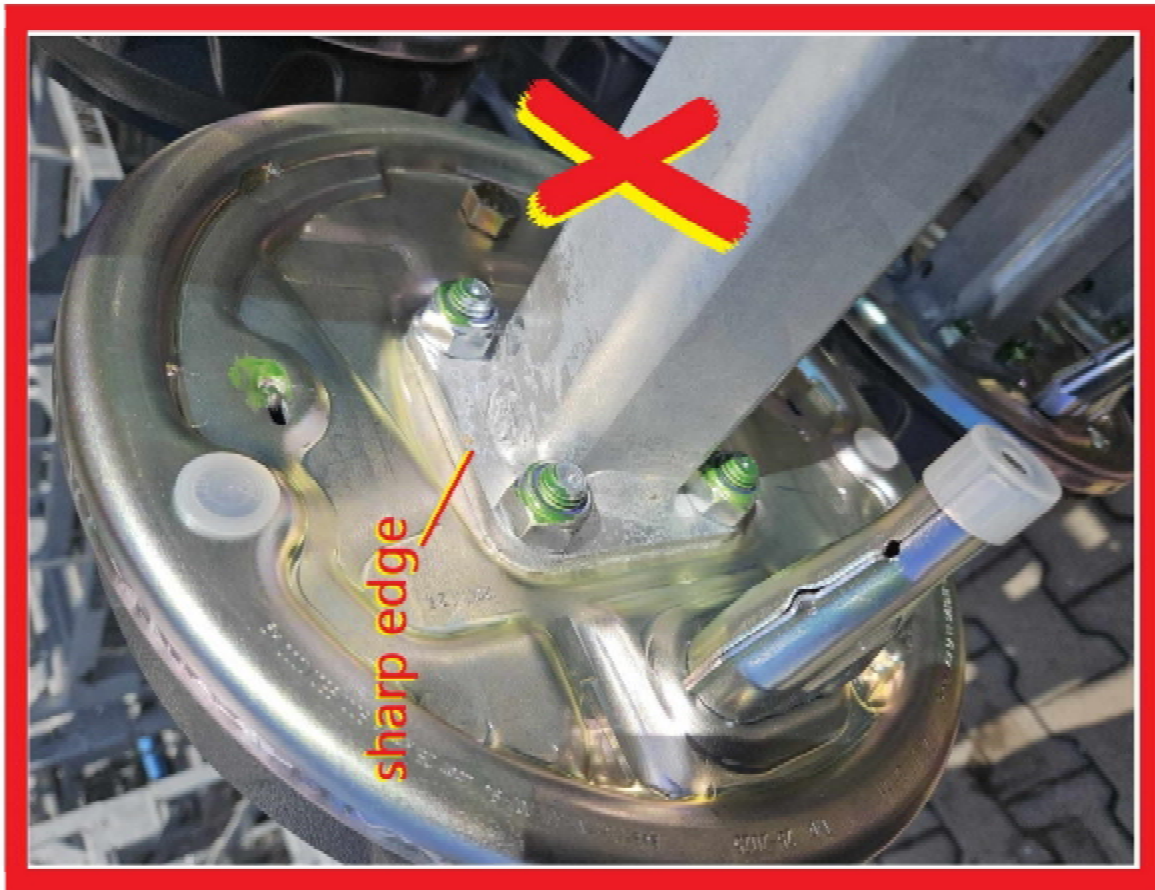


Photo2:



Photo3:



Photo4:



Photo5:

